

SensMax real time monitoring solutions

**This document describes special solutions from SensMax for real-time
people count monitoring.**

SOLUTION 1: OFFLINE REAL-TIME MONITORING

Description

This solution is intended for places where internet connection is not available, but required to determine visitors count which are currently inside the premise.

Benefits

- Works offline (no internet connection needed)
- Easy installation and setup
- Easy to use software
- Free software

Limitations

- No other people counting reports available
- No data export available
- Can be used with SensMax D3 LR sensors and TCP/IP LR data collector only (no other hardware supported)
- One data collector can be used with single PC

Required hardware and software

- ✓ SensMax D3 LR sensors
- ✓ SensMax TCP/IP LR data collector
- ✓ SensMax Live Report software
- ✓ Windows based PC with USB port

How it works

The SensMax TCP/IP data collector automatically detects that Live Report software is connected and switch into real-time mode. SensMax sensors send data to the collector immediately after new visitor come IN or OUT. If data collector has few sensors connected, all IN and OUT counting will be summed automatically for all sensors.

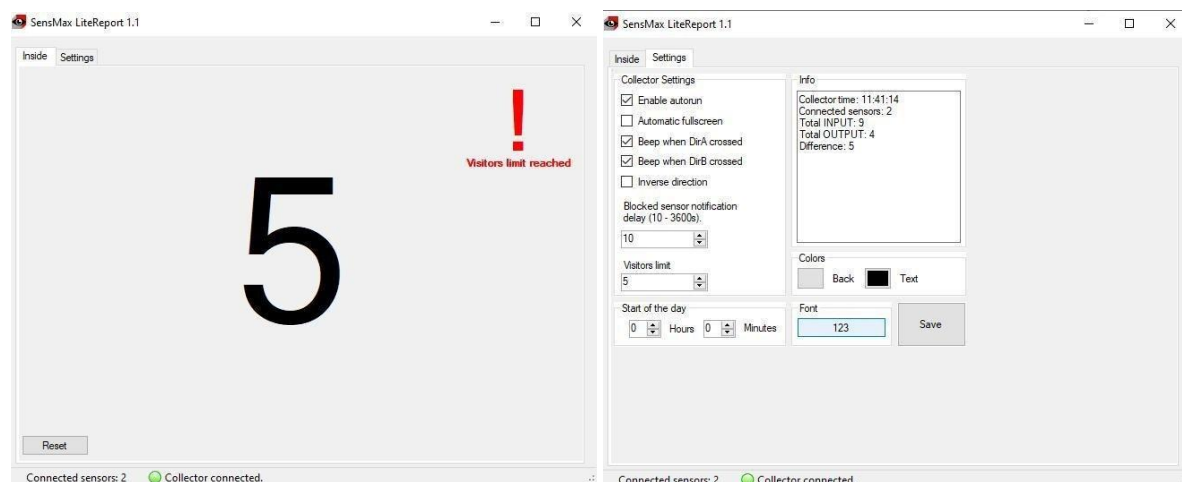
The SensMax Live Report software automatically subtracts the IN and OUT readings and display how many visitor currently inside the premise.

User can also setup the maximum limit of visitors, message and choose sound.

When limit is reached, the message will be displayed on the screen, also sound will play.

User can press the RESET button in any time to set current readings to zero.

The SensMax Live Report is highly configurable software. User can setup colors, full screen mode, alarm message and sound.



SOLUTION 2: ONLINE REAL-TIME MONITORING

Description

This solution is intended for places where internet connection is available. User will get powerful reporting system. All functions of SensMax Web application can be used. In same time, user can use Smart TV (or other smart device) on place, to show how many visitors inside premise.

Benefits

- Easy installation and setup
- Powerful reporting system
- All SensMax TIMESTAMP devices are supported
- Possibility of data monitoring on many devices
- Works on any web browser

Limitations

- Internet connection required

Required hardware and software

- ✓ SensMax D3 LR TS or D3 SLR TS sensors
- ✓ Any SensMax data collector with TIMESTAMP technology support (TCP/IP TS, WIFI TS, 3G TS)
- ✓ MY.SENSMAX.EU premium subscription

How it works

The "Immediate data delivery" function should be enabled in my.sensmax.eu web site. SensMax TIMESTAMP sensors send data to the collector immediately after new visitor come IN or OUT. All data packets are delivered to SensMax data server during 10 seconds or faster.

The special Live Report is available on my.sensmax.eu web site. This reports is intended to show how many visitors inside premise at current moment. User can choose one or few premises to display, also can setup this report for full screen show.

User can also setup the maximum limit of visitors, message and e-mail notification. When limit is reached, the message will be displayed on the screen, also e-mail notification will be send. User can press the RESET button in any time to set current readings to zero.

This example shows the Live Report for two locations:

